

News Briefs

Kennesaw State University
Office of Research

Inside this Issue:

Page 2	What is IRB and What Does it Do? ...continued
Page 3	Carolyn's Corner: Office Updates Federal Policy Updates
Page 4	Upcoming Deadlines Staff Directory

Congratulations to our Most Recent Awardees!

Lance Askildson	Freeman Foundation
Richard Clune	Internal Auditing Academic Enhancement Fund
Mark Forehand	Universidad de Guadalajara
Kimberly Gardner	University of Georgia
Ricky Garner	Target Foundation
Sherry Grable	Cobb County
Kyunghun Jung	ECOFEEL Company
John Isenhour	Affordable Learning Georgia
Thomas McElroy	Chopsticks for Salamanders
Jon Preston	The Home Depot
Jennifer Priestley	Kimberly-Clark
Sheb True	Laval University
Seneca Vaught	Affordable Learning Georgia
Virginia Watson	American Mathematical Society & Mathematical Assn of America
Michael Whitman	UT San Antonio
Leonard Witt	Proteus Fund, Institute for Intl Education, & Bowne Foundation

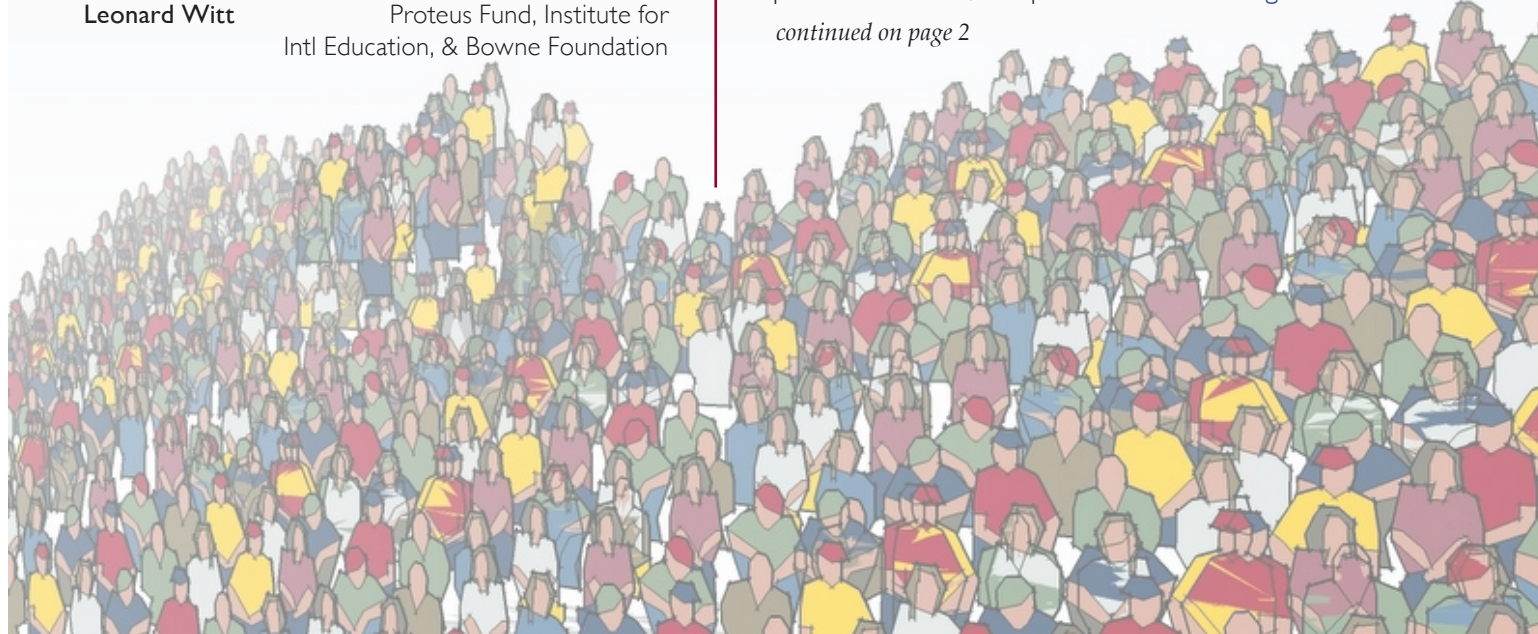
What is the IRB? and What Does it Do?

By Deanna Hendrickson

IRB stands for Institutional Review Board and its purpose is to regulate all research activities involving human subjects on the campuses of Kennesaw State University, ensuring that people who participate in research are treated ethically and in compliance with all federal and state laws and regulations. Every institution's IRB must comply with their own Federal-wide Assurance of Compliance, so the procedures and guidelines should be similar from university to university but might not be exactly the same. If you recently transferred from another university or are a new/seasoned KSU faculty member and want more information, please review our website and contact us with any questions you might have (<http://www.kennesaw.edu/irb/>).

KSU requires prior review and approval to be obtained from the IRB for all research involving human participants, including plans to gather data from participants for master's theses and other student projects. Any administration of a substance or stimulus, interview, test, use of records that identify living individuals, or observations of non-public behavior must be approved by the IRB. To determine if a project requires IRB Review, complete the [IRB Oversight Decision Tree](#).

continued on page 2



What is the IRB and What Does it Do?

continued from page 1

Types of IRB Review

The three types of IRB review include exemption classification review, expedited review and full board review. Remember that even if you believe your protocol to be considered exempt as defined below, you still have to submit your study information and request that exemption be approved by the IRB in order to remain in compliance with the Office of Human Research Protections (OHRP).

Exemption Classification Review: Federal regulations identify the six categories of research listed below as eligible for exemption from continuing IRB oversight (exempted studies do not require annual review by the IRB). Although these categories involve research with human subjects, the research exposes subjects to minimal psychological, social, or physical risks (minimal risk is a risk of harm to the subject that is no greater than the risk encountered in normal, day-to-day activities or during routine physical or psychological examinations).

1. Educational Purposes Only
2. Educational Tests, Surveys, Interviews, Public Observation
3. Elected or Public Officials
4. Research with Existing Data
5. Public Benefit or Service Programs
6. Taste Tests

IRB Approval Request Short Form – This form (submitted by faculty only) is used for requesting exemption for overall classroom research assignments involving human subjects when there is to be **no reporting outside the classroom** by student researchers. The faculty member takes primary responsibility for ensuring that students do not violate the rights and welfare of human subjects; that ethical principles for the protection of human subjects are communicated to students; and that students understand that the assignment is for educational purposes only.

Students who wish to collect data for possible use in future projects (for outside of the classroom projects) should be instructed by the faculty member to apply individually to the IRB for project review, as data

collected via the short form cannot be submitted to the IRB for retrospective review and approval.

Expedited Review: Expedited reviews are conducted when research involves no more than minimal risk to participants and falls within the seven designated categories listed below, with full details and examples found [here](#). Research involving any of the following may qualify for expedited review:

1. Clinical studies of drugs and medical devices only when condition (a) or (b) noted [here](#) is met.
2. Collection of blood samples by finger stick, heel stick, ear stick, or venipuncture
3. Prospective collection of biological specimens for research purposes by noninvasive means.
4. Collection of data through noninvasive procedures (not involving general anesthesia or sedation) routinely employed in clinical practice, excluding procedures involving x-rays or microwaves.
5. Research involving materials (data, documents, records, or specimens) that have been collected, or will be collected solely for non-research purposes (such as medical treatment or diagnosis).
6. Collection of data and analysis of existing voice, video, digital, or image recordings
7. Research on individual or group behavior or characteristics or research employing surveys, interviews, oral histories, focus groups, etc.

Studies involving children, prisoners, pregnant women, or impaired adults, use of deception, illegal activities, or private activities may require full board review. In addition, any study that involves gathering information of an extremely sensitive nature (e.g. info about substance use or abuse, sharing therapeutic insights, etc.) would also be subject to full board. Research with these protected populations or activities should be fully explained in the protocol so determination can be made by the IRB.



Full Board Review: If a study cannot meet exemption qualifications, or the IRB determines (following expedited review) that the study places participants at more than minimal risk, then a full board review is required. You will be notified that the study requires further review, the date of the meeting at which the study will be reviewed, and that your attendance is required in order to answer any questions that the board may have regarding the study. If you are unable to attend the meeting, full board review of the study will be postponed until the next regularly scheduled meeting of the board.

The details regarding the IRB Meeting Schedule can be found [here](#).

IRB Contact Information

Deanna Hendrickson, IRB Administrator
Director of Research Compliance
Office of the Vice President for Research
Kennesaw Hall (Building 1), Room 3403
(470) 578-2268

Dr. Christine Ziegler, IRB Director & Chair
Professor of Psychology
Department of Psychology
Social Sciences (Building 22), Room 4010
(470) 578-6407

The IRB website is packed with specific information on the appropriate process to [apply for review](#), [frequently asked questions](#), [additional resources](#), [training](#) and much more. All email correspondence should be sent to irb@kennesaw.edu, but you can always contact us via phone with any questions or concerns.

Carolyn's Corner

By Carolyn Elliott-Farino

OFFICE UPDATES

Welcome to all the faculty from SPSU who are now part of the "new KSU." We look forward to working with you and are thrilled about the opportunities now available in areas new to KSU, such as engineering and computer gaming. The consolidation of the two institutions has opened many new doors to KSU regarding grant opportunities.

As of the end of March, we had already submitted 13 proposals and had four in preparation for 14 PIs based on the Marietta campus. Natasha Stark has been busy – she has been working from the Marietta campus research office (the OSP office in the Atrium building) on Mondays and Tuesdays to provide support to the Marietta-based faculty, and is available other days by appointment, as are most of the research office staff. Kelly Millsaps has worked closely with these faculty as well, providing budget support and reviewing documents before submission. Sarah Hope Abercrombie is staying at the Marietta office and will continue to provide support to faculty in the postaward stage. Her role will transition to that of the Kennesaw-based grants managers, assisting faculty with procurement and hiring and figuring out how to get things done.

We did not get a newsletter out in January as we had hoped, and instead focused on getting to know the Marietta-based

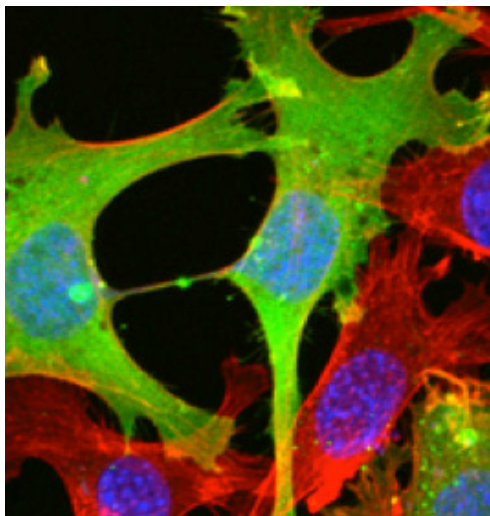


Image from the Scott Nowak lab

faculty and getting proposals out the door (45 proposals have been submitted so far in 2015 vs. 25 this same time in 2014). On January 20th, Kelly, Natasha, Anna McCoy, Reynolds Brown, Sarah, and I hosted morning and afternoon meet and greet sessions at the Marietta office. We were able to meet many currently funded faculty members, as well as faculty interested in proposal writing.

Betsy Adams, former director of the SPSU office, and Russ Hunt, former dean of SPSU's Extended University, have both moved to the Kennesaw office and each brings a wealth of experience and expertise to our midst. Betsy has assumed a new role as the Research Financial Compliance and Audit Officer and Russ is the Associate Vice President for Research where one of his responsibilities is commercialization of intellectual property. We will include brief bios of Russ, Betsy, and Sarah in our next newsletter.

FEDERAL POLICY UPDATES

In December 2013, the Office of Management and Budget (OMB) published the [Uniform Administrative Requirements, Cost Principles, and Audit Requirements for Federal Awards](#) (Uniform Guidance, or UG, for short), consolidating eight OMB circulars (Federal regulations) into one document. In order to give the Federal agencies, each of which is tasked with implementing these regulations via a policy document of some kind, time to revise their documents to conform to the new regulations, the UG went into effect for all new Federal awards issued on or after December 26, 2014. This website provides information and links: <https://cfo.gov/cofar/>.

We will be updating our website with revised budget information. One change you will like is the ability to directly charge computers that are "essential and allocable, but not solely dedicated, to the performance of an award." (2 CFR 200.453) The National Science Foundation has provided a helpful summary of changes to the PAPPG at the front of the December version: <http://www.nsf.gov/pubs/policy-docs/pappguide/nsf15001/sigchanges.jsp>.

The National Institutes of Health has issued an interim grant general conditions document available here: <http://grants.nih.gov/grants/policy/NIH%20Interim%20Grant%20General%20Conditions.pdf>.

pivot™
**Where funding
connected with
researcher expertise
turns into success.**
Log on at <http://pivot.cos.com>

Upcoming Deadlines

Arts & Humanities

- Doris Duke Foundation Building Demand for the Arts.....April 24 (LOI)
<http://www.ddcf.org/Programs/Arts/Initiatives--Strategies/Doris-Duke-Performing-Artist-Initiative/Doris-Duke-Building-Demand-for-the-Arts/>
- NEH Challenge Grants.....May 5
<http://www.neh.gov/grants/challenge/challenge-grants>
- NSF - Antarctic Artists and Writers Program.....May 10
http://www.nsf.gov/funding/pgm_summ.jsp?pims_id=503518
- USAID Conflict Mitigation and Reconciliation Programs.....May 20
<http://www.grants.gov/web/grants/view-opportunity.html?oppld=274846>

Education & Community Development

- U.S. Dept. of State – SportsUnited: International Sports Programming.....May 8
<http://eca.state.gov/organizational-funding/open-grant-solicitations>
- NSF - Research Experiences for Undergraduates (REU).....May 22
http://www.nsf.gov/funding/pgm_summ.jsp?pims_id=5517
- National Education Association Foundation Grants.....June 1
<http://www.neafoundation.org/pages/grants-to-educators/>
- Sprint Foundation – Youth Development.....June 1
<http://goodworks.sprint.com/people/communities/sprint-foundation/>

Health

- National League for Nursing – Nurse Education Research.....June 1
<http://www.nln.org/researchgrants/index.htm>
- NIH Small Grant Program (R03).....June 16
<http://grants.nih.gov/grants/funding/r03.htm>
- NIH AREA (R15).....June 25
<http://grants.nih.gov/grants/funding/area.htm>

STEM

(Science, Technology, Engineering, & Math)

- American Honda Foundation.....May 1
<http://corporate.honda.com/america/philanthropy.aspx?id=ahf>
- W.M. Keck Foundation – Science & Engineering/Medical Research.....May 1
<http://wmkeck.us/grant-programs/research>
- Dreyfus Foundation – Teacher-Scholar Awards in Chemical Sciences.....May 8
http://www.dreyfus.org/awards/henry_dryfus_teacher_award.shtml
- NSF - Cyberlearning and Future Learning Technologies.....May 11
http://www.nsf.gov/funding/pgm_summ.jsp?pims_id=504984
- NSF – Cybersecurity Innovation for Cyberinfrastructure.....June 2
<http://www.nsf.gov/pubs/2015/nsf15549/nsf15549.htm>
- NSF – Software Infrastructure for Sustained Innovation – S2I2.....June 3
http://www.nsf.gov/pubs/2015/nsf15553/nsf15553.htm?WT.mc_id=USNSF_25&WT.mc_ev=click
- NSF – Small Business Innovation Research Program (SBIR) Phase I.....June 16
http://www.nsf.gov/pubs/2015/nsf15546/nsf15546.htm?WT.mc_id=USNSF_25&WT.mc_ev=click
- NSF – Small Business Technology Transfer Program (STTR) Phase I.....June 18
http://www.nsf.gov/pubs/2015/nsf15545/nsf15545.htm?WT.mc_id=USNSF_25&WT.mc_ev=click

Social Sciences

- John & Polly Sparks Early Career Grant for Psychologists Investigating SED.....May 15
<http://www.apa.org/apf/funding/sparks-early-career.aspx?tab=1>
- Russell Sage Foundation – Research and Scholar Programs.....June 1
<http://www.russellsage.org/how-to-apply>
- NSF – Social Psychology.....July 15
http://www.nsf.gov/funding/pgm_summ.jsp?pims_id=5712&org=NSF&sel_org=NSF&from=fund

Staff Directory

Charles Amlaner
VP for Research
camlaner@kennesaw.edu

Russ Hunt
Associate VP for Research
rhunt22@kennesaw.edu

Ann Vancza
Executive Assistant for VP for Research
avancza@kennesaw.edu

Jennifer Harb
Administrative Associate
jharb@kennesaw.edu

Carolyn Elliott-Farino
Executive Director; Office of Research
cellio12@kennesaw.edu

Natasha Stark
Assistant Director; Preaward Services
nstart3@kennesaw.edu

Kelly Millsaps
Proposal Submission Coordinator &
SmartGrant POC
kmillsa3@kennesaw.edu

Reynolds Brown
Grants Manager; CSM
fbrown19@kennesaw.edu

Michael Mitchell
Grants Manager
mmitch91@kennesaw.edu

Sarah Hope Abercrombie
Grants Manager; Marietta Campus
shope1@kennesaw.edu

Shannon West
Director;
KSU Grants & Contracts Accounting
swest34@kennesaw.edu

Ariel Grier
KSU Project Accounting
agrier12@kennesaw.edu

Jane Madani
KSU Project Accounting
jmadani@kennesaw.edu

Anna McCoy
Senior KSURSF Accountant,
Reporting & Compliance
amccoy6@kennesaw.edu

Nikki Roux
KSURSF Accounting, Client Services
nroux@kennesaw.edu

Allyson Hogan
KSURSF Accounting, Accounts Payable
ahall8@kennesaw.edu

Betsy Rohr Adams
Research Financial Compliance Officer
erohrada@kennesaw.edu

Deanna Hendrickson
Director, Research Compliance
dhendric@kennesaw.edu